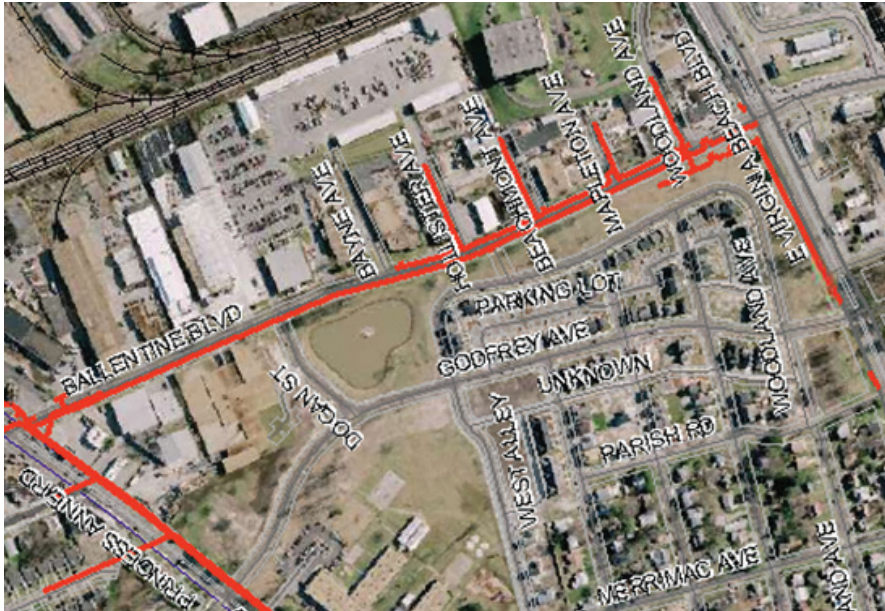


# Pipeline Replacement Project



Project map, affected streets highlighted in pink (above)

## Beachmont Avenue Project

Virginia Natural Gas provides safe and reliable natural gas service to more than 279,000 customers across southeastern Virginia. To ensure that safety and reliability are maintained, we have already made significant enhancements to portions of our natural gas distribution system and we plan to continue updating and modernizing our system by replacing more than 200 miles of aging pipeline infrastructure in coming years.

The work in your neighborhood is part of the company's natural gas infrastructure modernization plan. The program allows us to make necessary upgrades to our pipeline system so we can enhance the safety, reliability and integrity of the natural gas distribution system.

As part of the infrastructure modernization program we will replace aging mains and services, which may have developed leaks or become damaged over time due to road projects or age. The older pipe will be replaced with new polyethylene plastic that is less expensive to maintain and more durable. This will enhance the safety, reliability and integrity of the natural gas distribution system. Perhaps best of all, we're ensuring families and business owners have ready access to America's most abundant, environmentally friendly fuel... today and tomorrow.

*Directional drilling minimizes impact (right)*

## STREETS AFFECTED – NORFOLK

Ballentine Blvd.	Bayne Ave.
Princess Anne Rd.	Hollister Ave.
E Virginia Beach Blvd.	Dogan St.
Woodland Ave.	Parish Rd.
Mapleton Ave.	Godfrey Ave.
Beachmont Ave.	

## PROJECT SCOPE

### Installation of:

- 17 customer services
- 2105' of 2" Plastic Main
- 2267' of 6" Plastic Main
- 135' of 8" Plastic Main
- 285' of 12" Steel Main

## PIPELINE REPLACEMENT PROGRAM

- Replacement of steel mains and services
- Increased reliability
- Improved service
- Clean, safe, efficient natural gas

## PROJECT CONTACT

### Wayne Jacas

Phone: 757.616.7518

Fax: 757.616.7517

