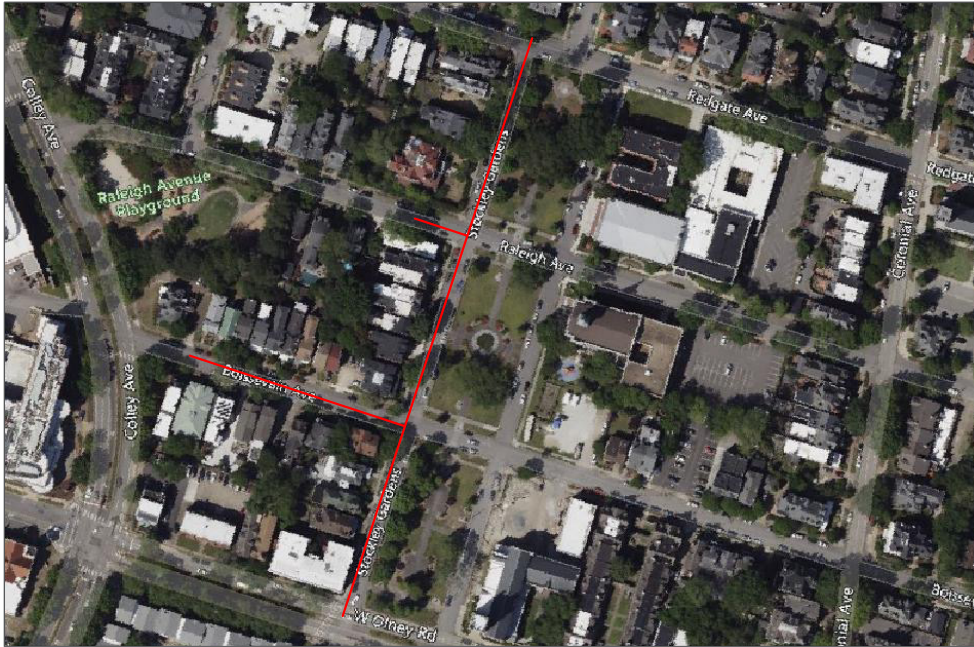


# Stockley Gardens Renewal



Project map, affected streets highlighted in red

The work in your neighborhood is part of VNG's modernization program, aimed at updating our existing natural gas infrastructure. During this project, we will replace aging pipes with new polyethylene plastic pipes that are more durable, reduce methane emissions and are less expensive to maintain.

Virginia Natural Gas has a long track record of delivering clean, safe, reliable and affordable natural gas service to our more than **310,000 customers** across southeastern Virginia. Through our renewal efforts, we will ensure our customers continue to have ready access and receive the service they deserve.

The project will be coordinated with local officials and will use traffic control measures that meet Virginia Department of Transportation standards. We take great care in implementing the safest and best construction practices to protect your property during construction and will make every effort to restore it to its original condition. Your natural gas service is not expected to be interrupted during the construction process.

VNG reminds community members to remain vigilant and use extra precaution around any active construction site. Ensure the safety of your children and pets by keeping them away from work areas.

When traveling through construction zones, drive and walk carefully, do not park in locations marked as hazardous and follow and obey the direction of traffic signs and on-site crews.

## City Affected

Norfolk

## Streets Affected

Stockley Gardens  
Boissevain Ave.  
W Olney Rd.  
Raleigh Ave.  
Redgate Ave.

## Project Scope

Installation of:  
➤ 20 Services  
➤ 1,600' of 2" Plastic

## Our Commitment

Virginia Natural Gas is committed to completing this renewal project as quickly and safely as possible and with minimal service interruptions. We will keep you informed of any construction work affecting your neighborhood. Thank you for your patience.



**Scan the QR code**  
to learn more and  
view additional  
work in your  
neighborhood.